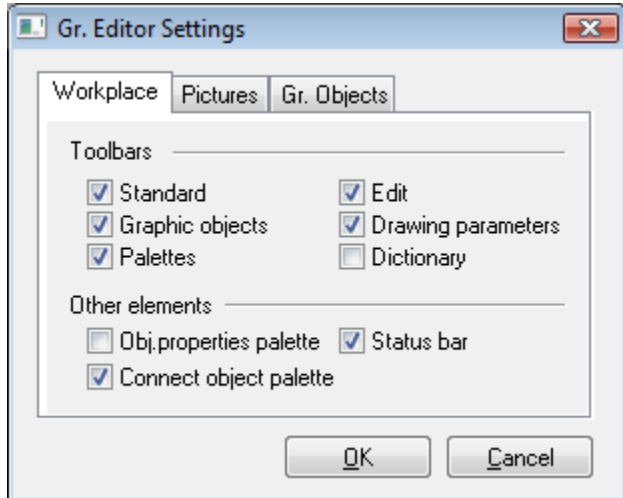


# GrEditor Settings

## Graphic editor settings

The settings of the process [D2000 GrEditor](#) are being configured in the **Gr. Editor Settings** dialog box. To open this dialog box, click the item **Gr. Editor settings** in the menu **Settings**. This item is also included in the [popup menu](#) opened by pressing the right-mouse button on the picture when no graphic object is selected.



The dialog contains the following tabs:

- [Workplace](#)
- [Pictures](#)
- [Gr. Objects](#)