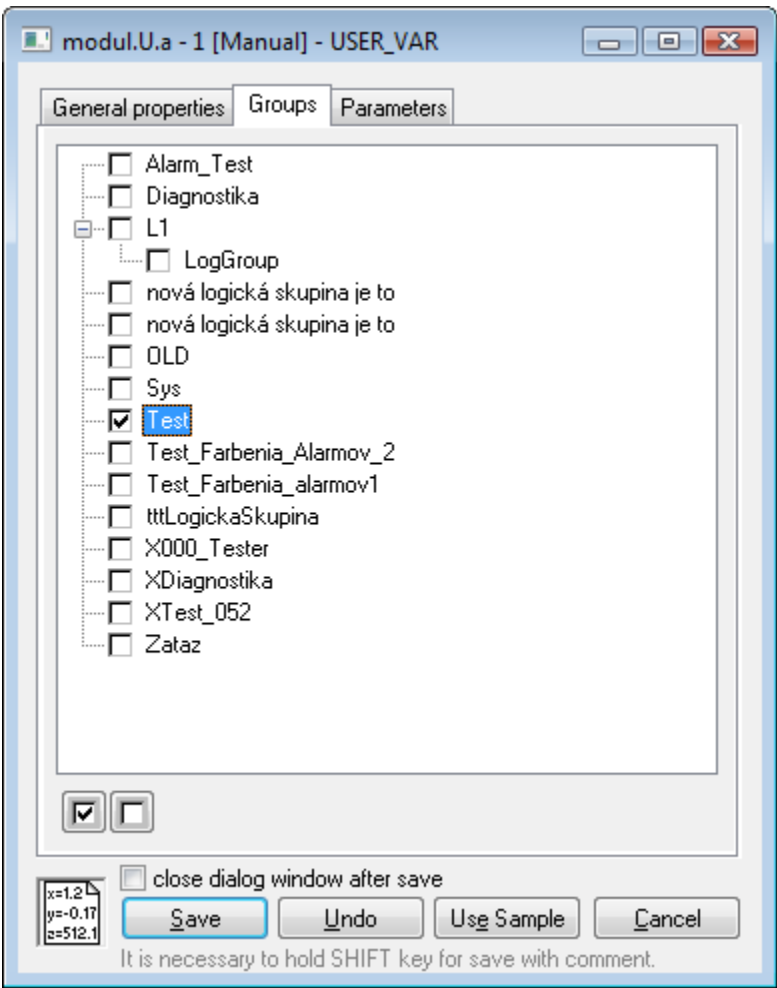


Assign the Object to Logical Groups at its Configuration

Assigning the object to logical groups at its configuration

Object may be assigned to logical groups during its configuration (the process [D2000 CNF](#)) through the tab **Groups**.



The tab contents is formed by tree structure of all logical groups defined in the application. The symbol in front of the name of each group shows, if configured object is, or is not the member of the particular group. It may be changed by left-clicking particular symbol.

<input checked="" type="checkbox"/>	Includes the object in selected group.
<input type="checkbox"/>	Excludes the object from selected group.

After the object is saved, the D2000 system performs the changes you made.