

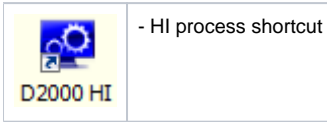
Start

HI process - Starting

Process [D2000 HI](#) can be started by one of the following ways.

Starting the HI process using the shortcut

1. The **D2000 HI** shortcut is placed in the D2000 system directory.
2. Double-click the shortcut to start the HI process.



This icon can be replaced by an icon with the name D2000_HI.ico located in the application directory. This option allows you to distinguish HI start icons for each application.

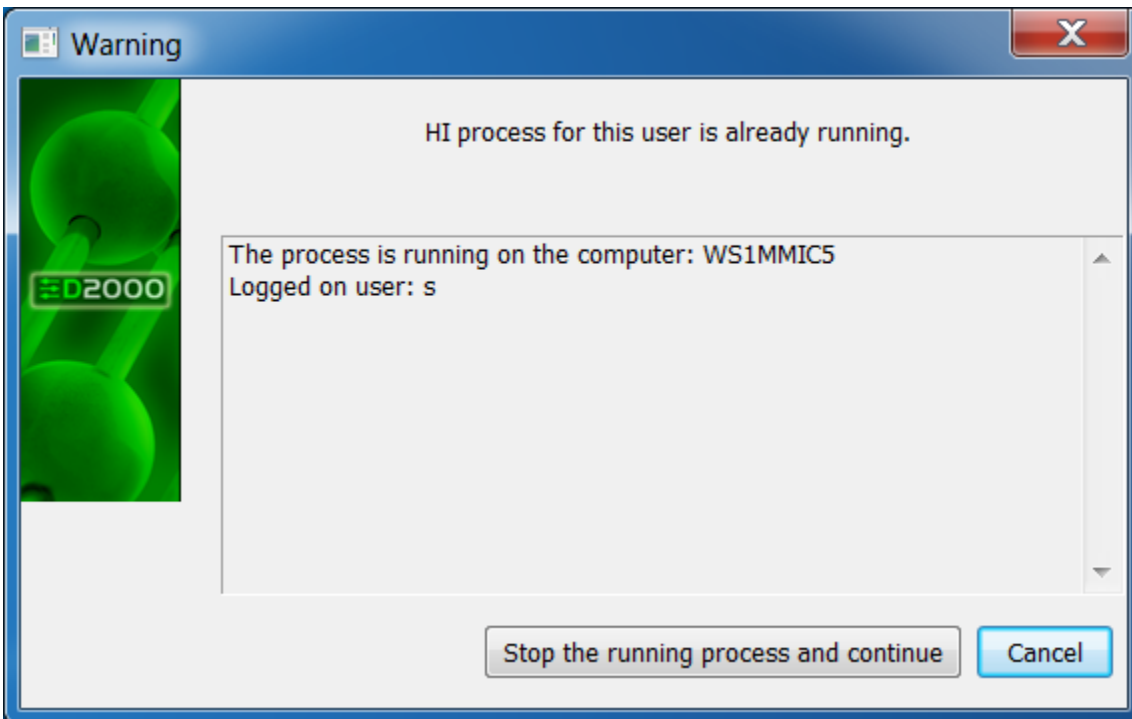
Starting the HI process from the Start menu

1. Click the **Start** button placed in the corner left bottom of your Windows Vista and higher desktop.
2. Point the cursor to the **Programs** item.
3. In opened menu select the folder **D2000 V11.00** and click the **D2000 HI** item.

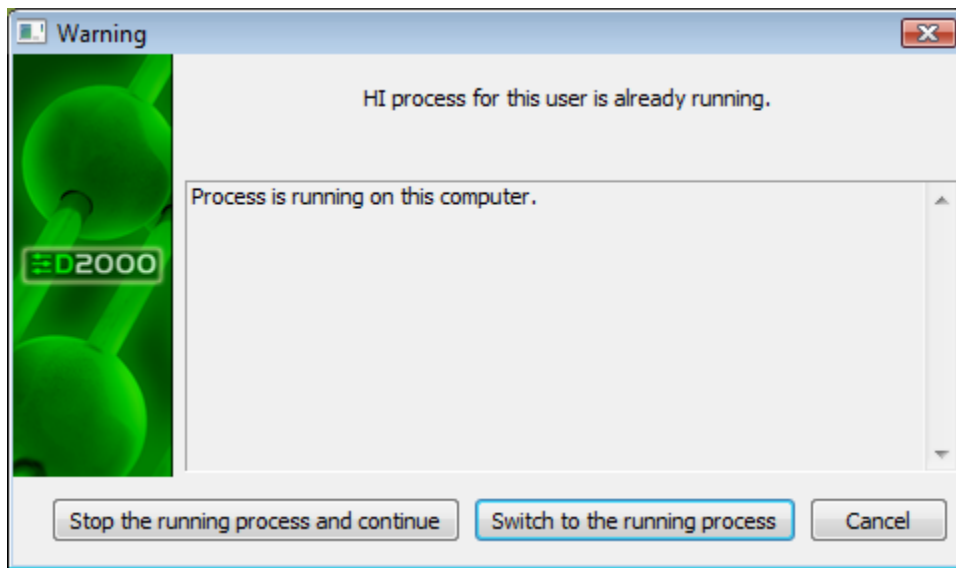
Starting the HI process from the command line

1. Click the **Start** button placed in the corner left bottom of your Windows Vista and higher desktop.
2. Select the **Run...** item
3. Enter the path, name of "exe" file of the HI process (hi.exe) and [start parameters](#).
4. Click the **OK** button.

Note: If the HI process with the same name is already running on other workstation, the alert dialog opens. It informs the user on which workstation D2000 HI is running and who is logged on. The user can stop this HI by clicking on the button **Stop a running process and continue**.



If HI process is running locally, the alert dialog box enables to switch to this running HI - button **Switch to the running process**.



Related pages:

- [Access to the HI process](#)
- [Start parameters of HI process](#)