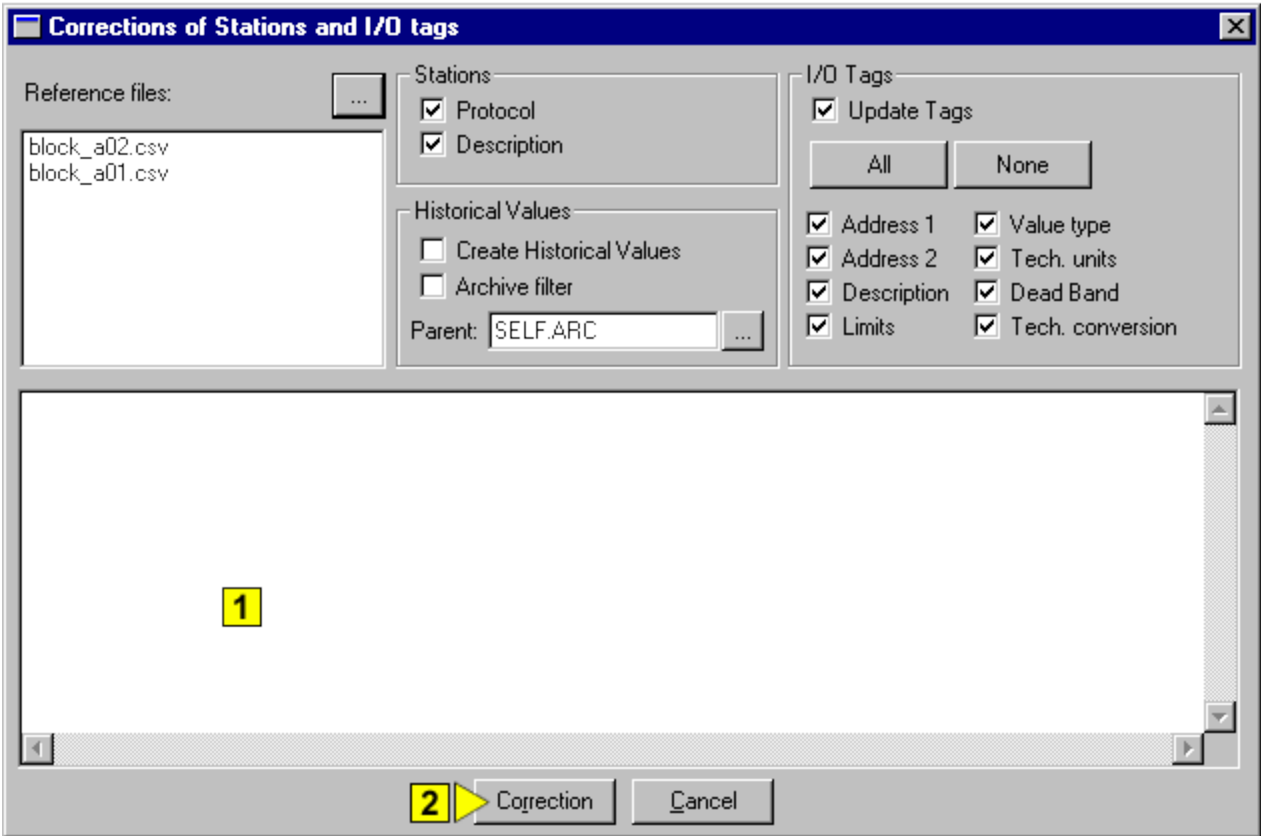


Corrections of I/O tags and stations

!!! WARNING: Process D2000 SysEdit is not supported from Version 7.2 and later !!!

Corrections of I/O tags and stations are used for quick configurations of objects using reference files of the types [CSV](#) and [REF](#). Using these files you can create or update parameters of stations and I/O tags. Clicking the item **Correction** from the menu **Tools** opens the following dialog box.



1	Logs process and results of correction
2	Starts process of station or I/O tags correction

Reference files

List of reference files (*.ref, *.csv). Correction will be executed according to them.

Stations

The options **Protocol** and **Description** define, whether to change the given configuration parameters of communication stations according to the given reference files. If the option(s) is checked, the corresponding parameter(s) is to be changed according to the reference files. This update will be executed for all stations from the configuration database, which are also specified in the reference files.

Historical values

Process [D2000 SysEdit](#) allows to create an archive object - object of [Historical value](#) type - from the I/O tags defined in reference files. If the option **Create Historical values** is checked, there will be created an archive object (historical value) for each of the I/O tags defined in reference file. The parameter **Parent** determines, whether the filter settings from the reference file can be used for created archive value. Names of new archive objects are created according to the following rules:

1. if the I/O tag name has the following structure `tag_prefix.tag_proper_noun.tag_suffix`,

the structure of the archive object will be as follows

`ar_prefix.tag_proper_name.ar_suffix`

For example: a corresponding historical value to the IO tag *M.TempAvg.B04* is the value *AH.TempAvg.AR1*.

2. if the I/O tag structure follows this pattern

`#.tag_proper_noun.tag_suffix,`

the archive object name will have the following structure

`ar_prefix.#.ar_proper_name.ar_suffix`

For example: for the IO tag *StationKS2.TempAvg.B04*, a historical value *AH.StationKS2.TempAvg.AR1* will be created.

Note: During the object creation the character „#“ is replaced by the parent name of this object.

I/O tags

If during correction in reference files, process [D2000 SysEdit](#) finds an I/O tag which is not in the configuration database, the program adds the I/O tag into the database. If such an I/O tag already exists in the database and the option **Update Tags** is checked, the program overwrites its configuration in the database according to the reference file. This I/O tag update concerns just the parameters, which are checked in the dialog box.