

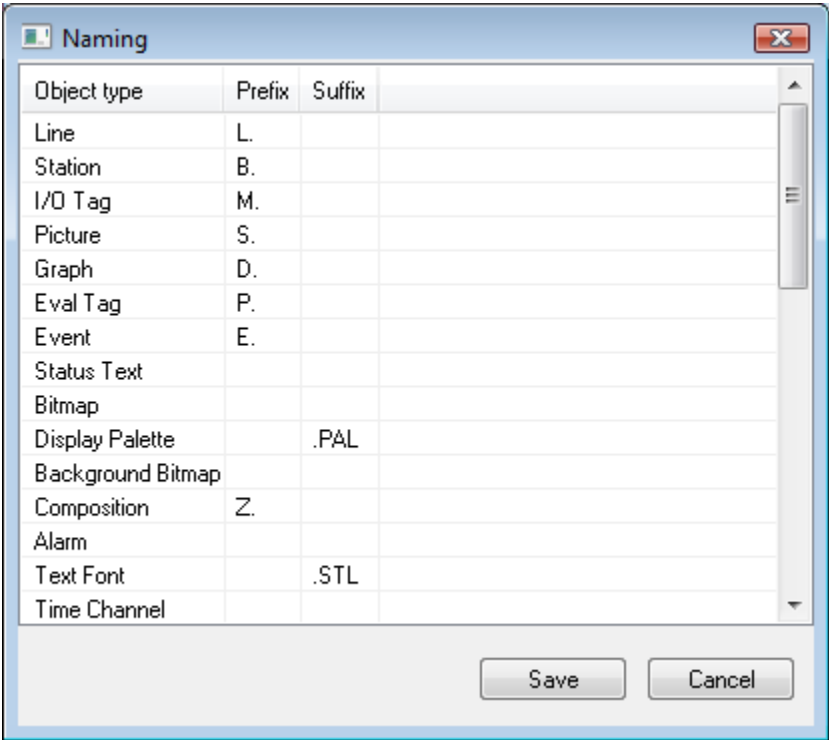
# Naming - definition of object prefix and suffix

Name of every D2000 system object comprises three parts - prefix, proper object name and suffix. Prefix and suffix are separated from proper object name by point (.) and are optional.

```
prefix.object_name.suffix
```

Prefix and suffix depend on the system configuration and common user of the system cannot modify them. Process [D2000 SysEdit](#), as the only one of the D2000 System configuration tools, allows to configure these two parts of object name.

Clicking on the item **Naming** from the menu **System** opens the following dialog box.



The dialog box includes the list of individual object types as well as some specific objects (e.g. object representing the start and stop condition of system alarms, start object (trigger) for events etc.).

Editing the prefix and suffix for required object type is performed by double-clicking the particular field in the list.

The form of prefix/suffix including a separator (e.g. ".") is typed into the input filed **Prefix** or **Suffix**. Exception is a prefix/suffix defined as the character "#". This character is to be replaced by the parent name when creating an object of particular type. The main reason for this feature implemented by means of the character "#", is to keep the compatibility with older versions of D2000 system, where the suffix of I/O tags was the name of the object parent, i.e. the name of particular communication station.