

Open a Report (HI)

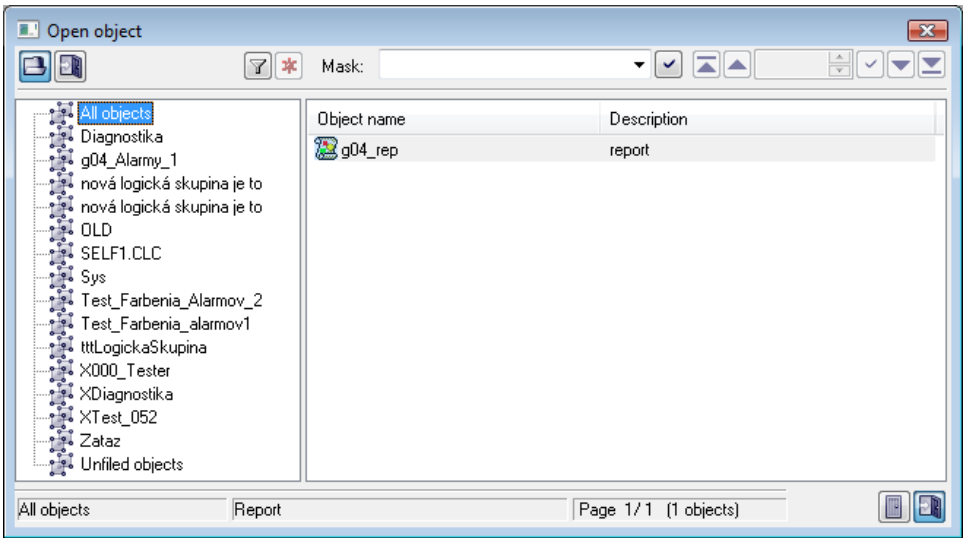
Open a report


Warning: Since the version D2000 V10.037, the object **Reports** is not supported and the access to it is removed in the D2000 HI environment.


Each report is identified by unique name (D2000 System object) and description in the system.

To open a report on the HI desktop:

1. Select the **Report** item from the **Open** or click  button in the **Main toolbar** (or press CTRL+R).
2. The selection window containing a list of defined reports is opened.





3. Select required report from the list by clicking on its name.
4. Click  button. You can open each report by double-click on its name.

To find a particular report in the list is possible by **mask** or by filter (clicking on button ). By using filter, the mask is blocked but the text is not deleted.

Push the ENTER key or button  to start searching.

The text from filter is deleted after clicking on button . The button is active only if the filter contains some text.

The buttons placed on the bottom right corner determine the behaviour of the selection window after selecting the object:

	Unclose the selection window.
	Close the selection window.

Note

- If the notice **List is empty!** appears in the window it means that no report, with the name matching given mask, has been inserted into the list or logged on user does not have the access right to reports.



Related pages:

[Reports](#)