

D2000_WorkBook.xll Installation

D2000 WorkBook.xll installation

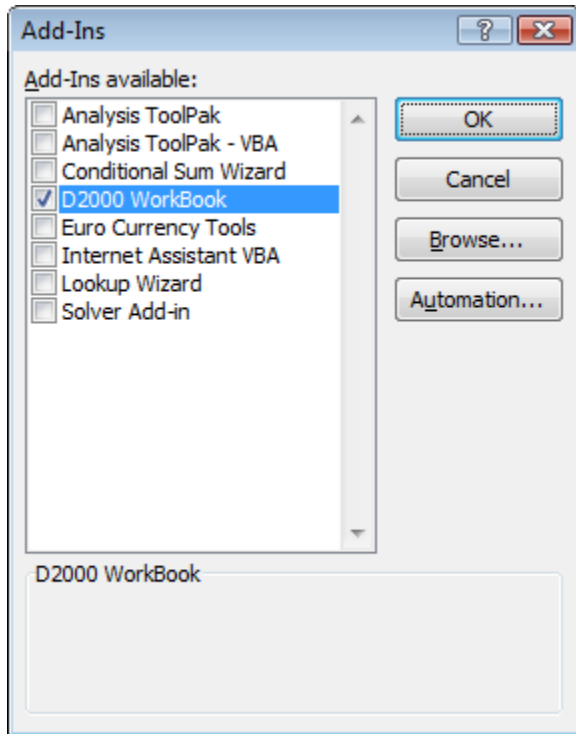
The file *D2000_WorkBook.xll* implements two basic functions for accessing current or archive values of D2000 system objects. Its installation consists of the insertion of the file to the list of add-ins, which are activated after launching the MS Excel.

Two techniques to add *D2000_WorkBook.xll* file into MS Excel:

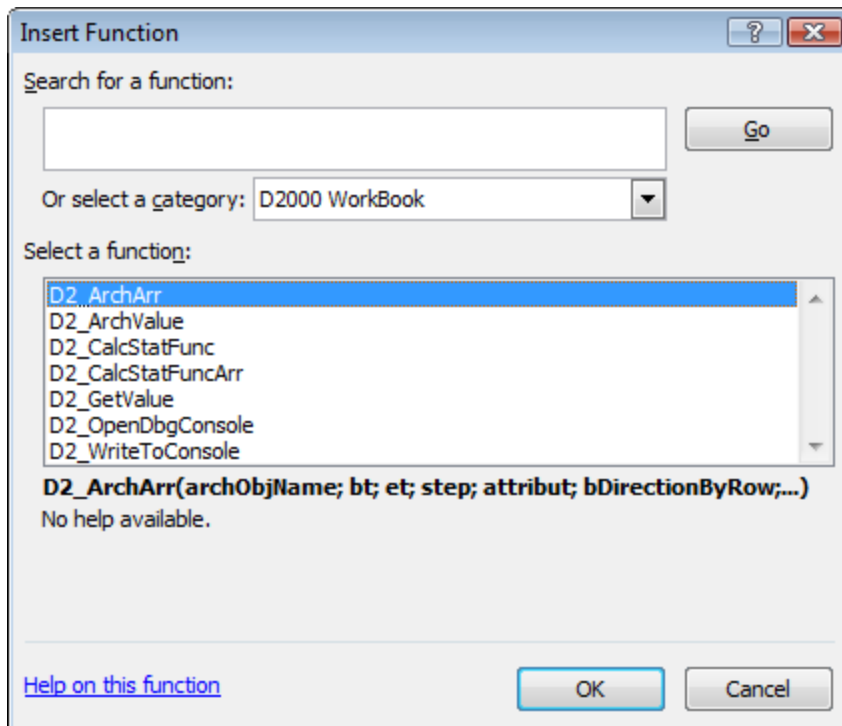
- [MS Office 2003 and higher](#)
- [MS Office 97 and higher](#)

Microsoft Excel 2003 and higher

To add D2000_WorkBook.xll into list click on **Office Button** / **Excel Options** / tab **Add-Ins**. Click on **Go...** and the dialog box *Add-Ins* will open. Then click on **Browse...** and search *D2000_WorkBook.xll* in the directory [D2000.exe\bin](#). The functions of D2000 WorkBook will be add among other add-ins in MS Excel.



D2000 WorkBook functions:

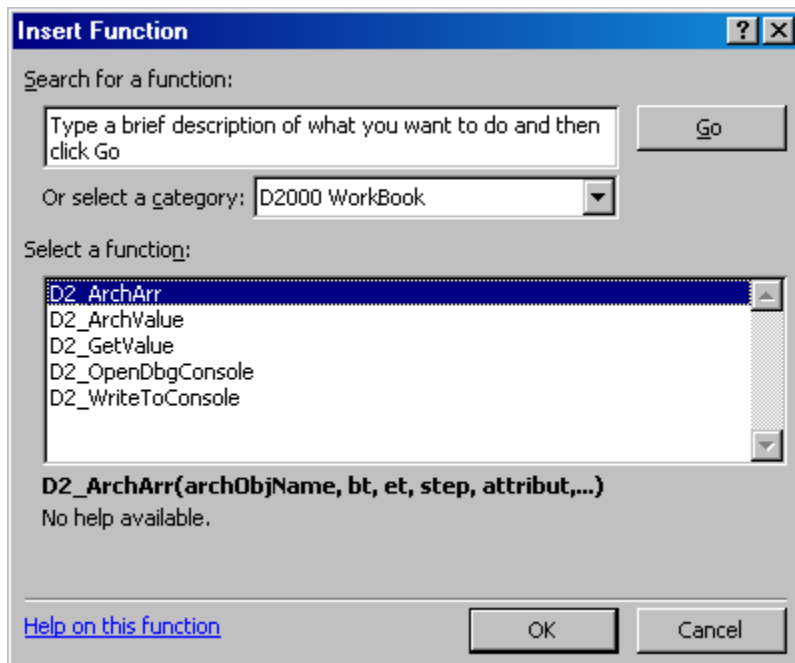


Microsoft Excel 97 and higher

To insert the file click the menu **Tools** and then the item **Add-ins**. In the opened dialog box click the button **Browse** and find and select the file [D2000.e60\bin\D2000_WorkBook.xll](#).

After the correct installation, the list of MS Excel functions is extended by the category **D2000 WorkBook** containing the following functions:

- **D2_ArchArr**
- **D2_ArchValue**
- **D2_CalcStatFunc**
- **D2_CalcStatFuncArr**
- **D2_GetValue**
- **D2_OpenDbgConsole**
- **D2_WriteToConsole**.





Related pages:

[D2000 WorkBook](#)