


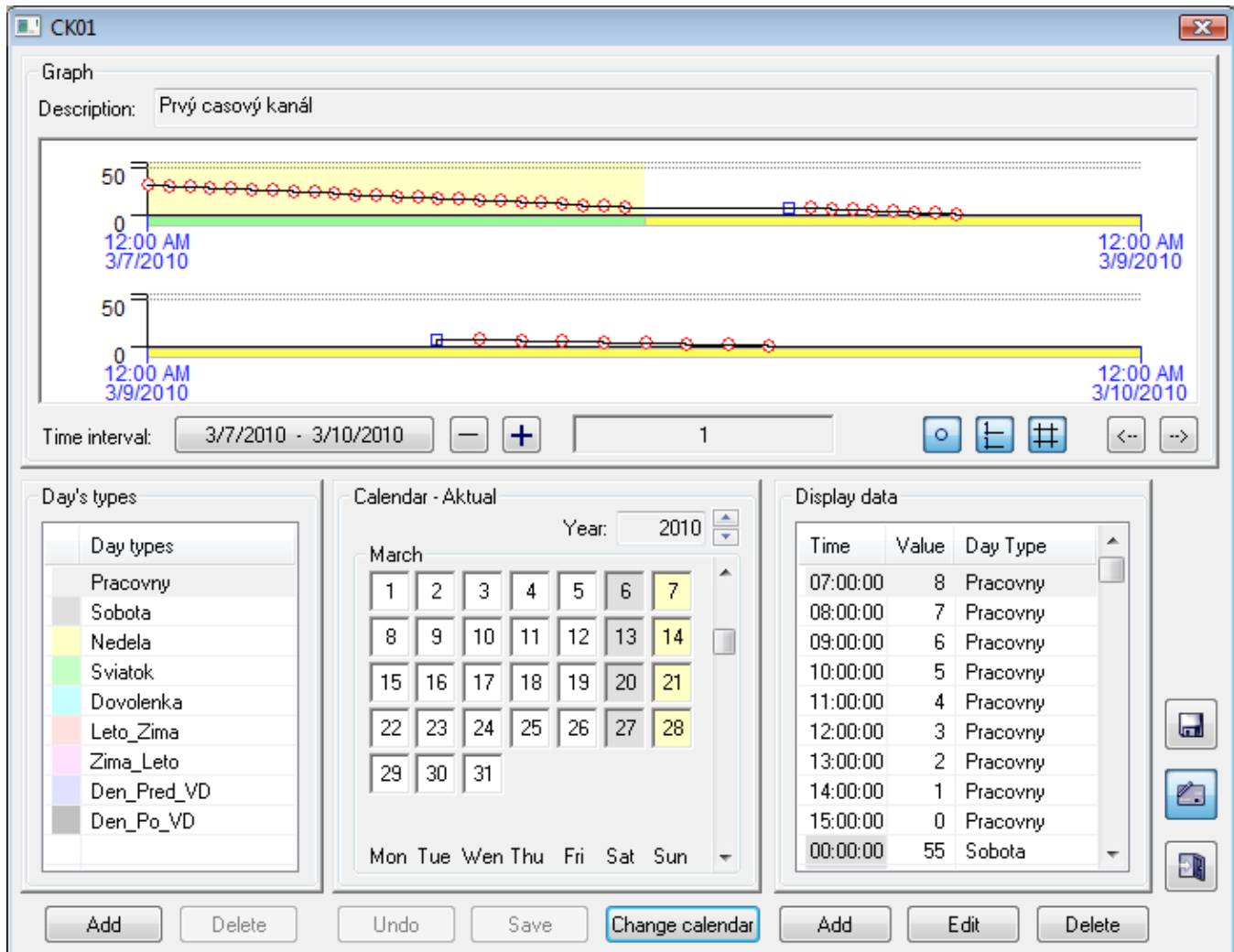
Edit the Time Chanel Data

Edit the time channel data

When browsing the representation of the time channel data flow, it is possible to carry out the following operations:

- [Add / Delete day types](#)
- [Edit displayed calendar](#)
- [Change used calendar](#)
- [Edit the time channel data](#)

To edit time channels click  button that will be available only if user has the access rights to edit object of time channel. The dialog box is enhanced with the edit buttons after clicking the button.



To add and delete day types

There are two buttons:

- **Add** - clicking the button opens the dialog box to enter a name of new "Day type" object. The object is added to the list after entering.
- **Delete** - it deletes and discards selected object from the list. If the button is not available, the selected object may not be deleted.

Edit displayed calendar

You can change types of days in displayed calendar as follows:

1. Select required day type in the list of day types.
2. Click the day you want to edit.

There are two buttons:

- **Undo** - cancel all changes performed in the displayed calendar
- **Save** - save all changes to the configuration database

The buttons will be available only if you carry out any change in edited calendar. Calendar may not be edited, if the buttons are not displayed.

Change used calendar

Clicking the **Change calendar** button opens the dialog box containing a list of available calendars. You may choose a new calendar from the list.

Edit the time channel data

There are three buttons:

- **Add** - clicking the button opens the dialog box to add a new item of the time channel data. The object is added to the list after entering.
- **Edit** - edit selected data item of the time channel.
- **Delete** - delete selected item of the time channel.



and button to save changes of the time channel. The button will be displayed only if you edit any time channel item.



Clicking button terminates editing. Checking presence of any unsaved changes in the calendar and time channel is performed when you terminate editing. Detection of any changes opens the dialog box intended to save them.



Related pages:

[Time channels](#)