

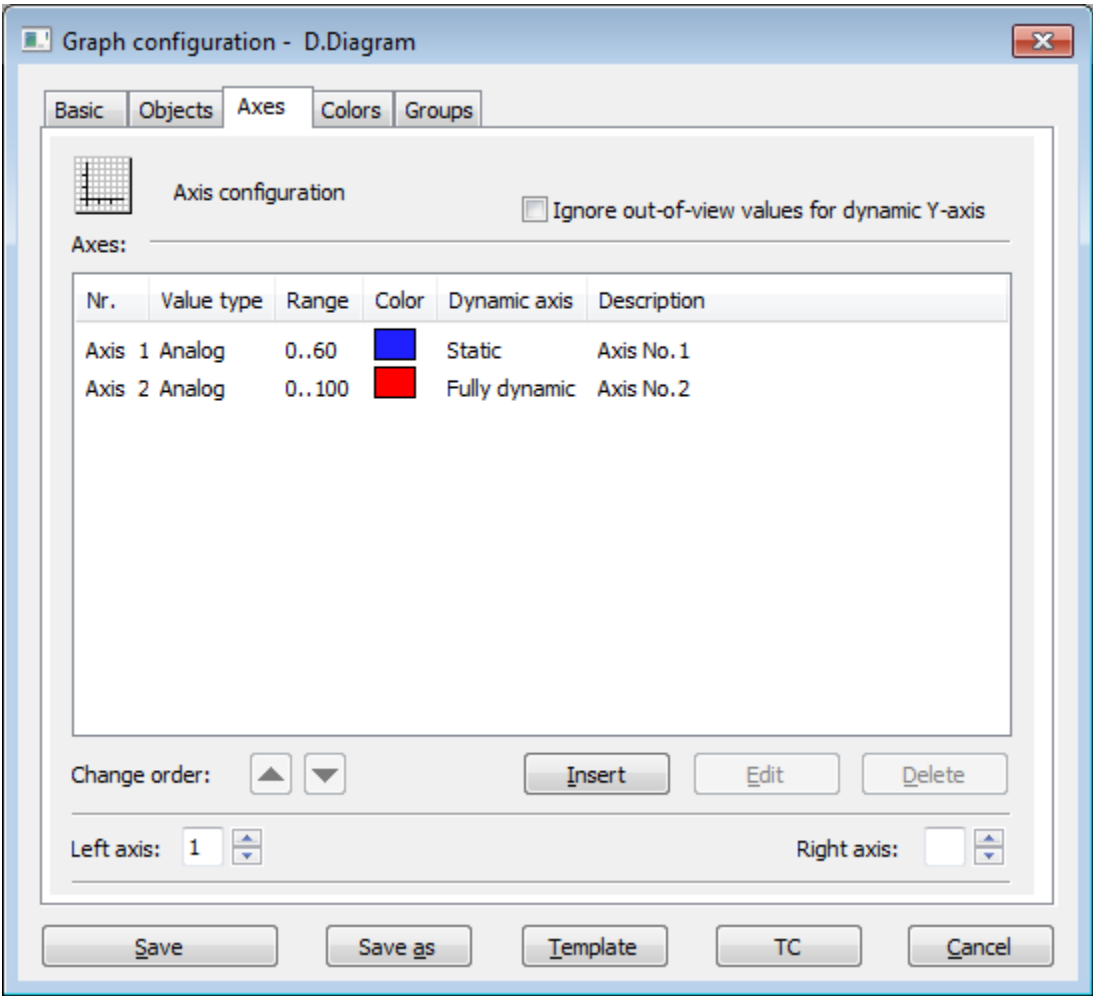
# Axes (Work with D2000 HI)

## Description of "Graph configuration" dialog box - Axes

To configure axis settings use the graph configuration dialog box – the **Axes** tab.

You can define up to 99 different vertical axes (y-axes) for each graph. Two axes - left and right - may be displayed simultaneously in a graph window. Also parameters of the x-axis for XY graphs are set in this configuration window. X-axis is always an analog type and some its elements are disabled.

Displaying of each axis may be enabled/disabled in the graph window according to the user's needs.



The buttons are accessible when some object is chosen in the list.

While an axis is modified (in [Axis configuration](#) dialog window) most of the buttons are disabled. An edited axis can be changed by doubleclick in the list of axes or by selecting the axis and clicking on **Edit** button.

Ignore out-of-view values for dynamic Y-axis

If the parameter is checked, the range of the dynamic y-axis will be determined by the values within the [time interval](#). If the parameter is not checked, the values out of defined time interval will also be taken into account.

Left axis

Number of axis that to be displayed as left after opening the graph.

Right axis

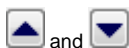
Number of axis that to be displayed as right after opening the graph.

Axes

List of axes defined for the graph. The list contains the following columns:

<i>Nr.</i>	Axis serial number. The number is also in the header of <a href="#">Axis configuration</a> dialog box.
<i>Value type</i>	Value type (the parameter <a href="#">Axis type</a> in the dialog box <a href="#">Axis configuration</a> ).
<i>Range</i>	<ul style="list-style-type: none"> <li>• for analog axis - axis range (the parameters <a href="#">Minimum</a> and <a href="#">Maximum</a> in the dialog box <a href="#">Axis configuration</a>)</li> <li>• for digital axis - number of levels (the parameter <a href="#">Number of levels</a> in the dialog box <a href="#">Axis configuration</a>)</li> </ul>
<i>Color</i>	Axis color (the parameter <a href="#">Axis color</a> in the dialog box <a href="#">Axis configuration</a> ).
<i>Dynamic axis</i>	Dynamic axis type - for analog axis only (the parameter <a href="#">Dynamic axis</a> in the dialog box <a href="#">Axis configuration</a> ).
<i>Description</i>	Axis description (the parameter <a href="#">Axis description</a> in the dialog box <a href="#">Axis configuration</a> ).

Change order



The buttons allow to change the axes order definition in the list. The order defined in the list will be adjusted in point configuration.

Insert

Allows to define a new axis. Clicking on the button opens the [Axis configuration](#) dialog box to define the axis parameters.

Edit

Allows to edit the parameters of selected axis.

Delete

Deletes selected axis.

**Note:** Deleting an axis assigned to an object in the graph, displays the dialog box to define the number of an axis, which will be assigned to the object instead of the axis you are deleting.

Change number of assigned axis

Original axis number: 2    New axis number: 1

Change



**Related pages:**

[Configuration of graphs](#)  
[Axis configuration](#)