


# Browsing Values from the Archive (Work with D2000 HI)

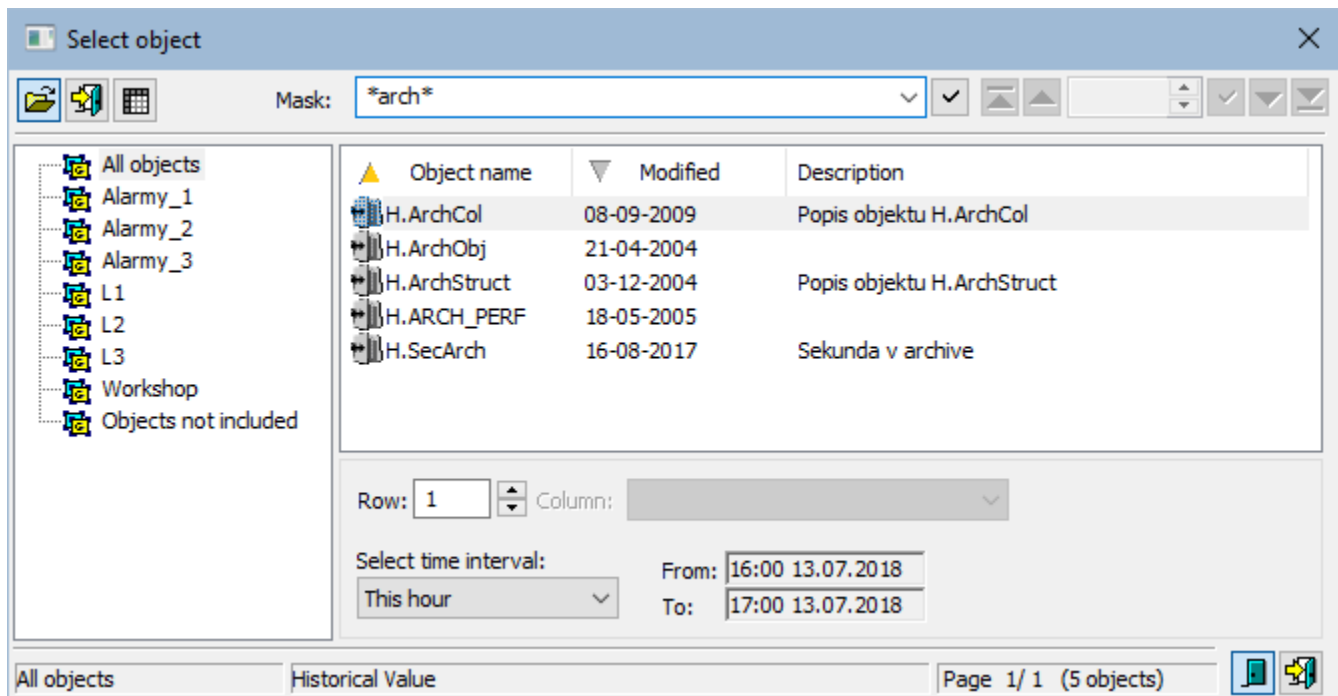
## Browsing values from the archive

The process [D2000 HI](#) allows you to browse values from the archive in two ways:

1. Browsing values of archived objects (object of *Historical value* type) directly in the process [D2000 HI](#)
2. Export of values of archived objects (into a .TXT file, .CSV file, clipboard, printer)

### 1. Browsing values of archived objects (object of *Historical value* type) directly in the process [D2000 HI](#)


- a. Select the **Archives** item from the **Open** menu or click  button in the [Main toolbar](#) (or press CTRL+H).
- b. Selection window containing a list of defined archive objects is opened.




1. Select an archive object from the list by mouse click on its name. If the selected object is a structure containing more rows and columns, define particular row and columns (the parameters **Row** and **Column**).

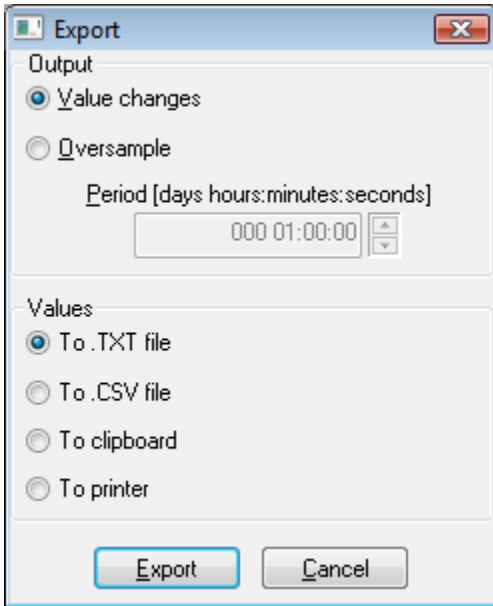
**Note:** If the parameter **Row**=0, then all rows of specified structured archive are to be displayed in a dialog box.

2. Select a time period (**Select time interval** item):
  - **This hour** – shows values written into the archive during current hour
  - **Last 2 hours** – shows values written into the archive during last 2 hours
  - **Last 8 hours** – shows values written into the archive during last 8 hours
  - **Last 12 hours** – shows values written into the archive during last 12 hours
  - **Last 24 hours** – shows values written into the archive during last 24 hours
  - **This day** – shows values written into the archive during current day
  - **Customize** - allows the user to define own time interval

3. Click on  button to confirm selected archive object (historical value) and time period.
4. Opened [dialog box](#) shows values of the archive object within the defined time interval.

### 2. Export of values of archived objects (into a .TXT file, .CSV file, clipboard, printer)

1. In the selection window (the picture above) select an archived object (or more objects) and click the button  - **Export**.
2. The following dialog box opens:





3. In the dialog box, set required export parameters:
  - **Value changes** - exports value changes only.
  - **Oversample** - exports values according to the oversample setting (the parameter **Period**).
  - **To .TXT file** - exports values to a .TXT file. Clicking the button **Export** opens a dialog box allowing to save the file.
  - **To .CSV file** - exports values to a .CSV file. Clicking the button **Export** opens a dialog box allowing to save the file.
  - **To clipboard** - exports values to the clipboard.
  - **To printer** - prints values. Clicking the button **Export** opens a dialog box containing the printer and page parameters.
4. Click the button **Export**.

**Note:** Values of one archived object may be also exported from the [dialog box for historical value representation](#) - the button **Export**.

**Note:** If the parameter **Row=0**, then all rows of specified structured archive are to be exported.

Buttons placed on the bottom right corner determine the behavior of the selection window after selecting an object:

	Unclose the selection window.
	Close the selection window.