

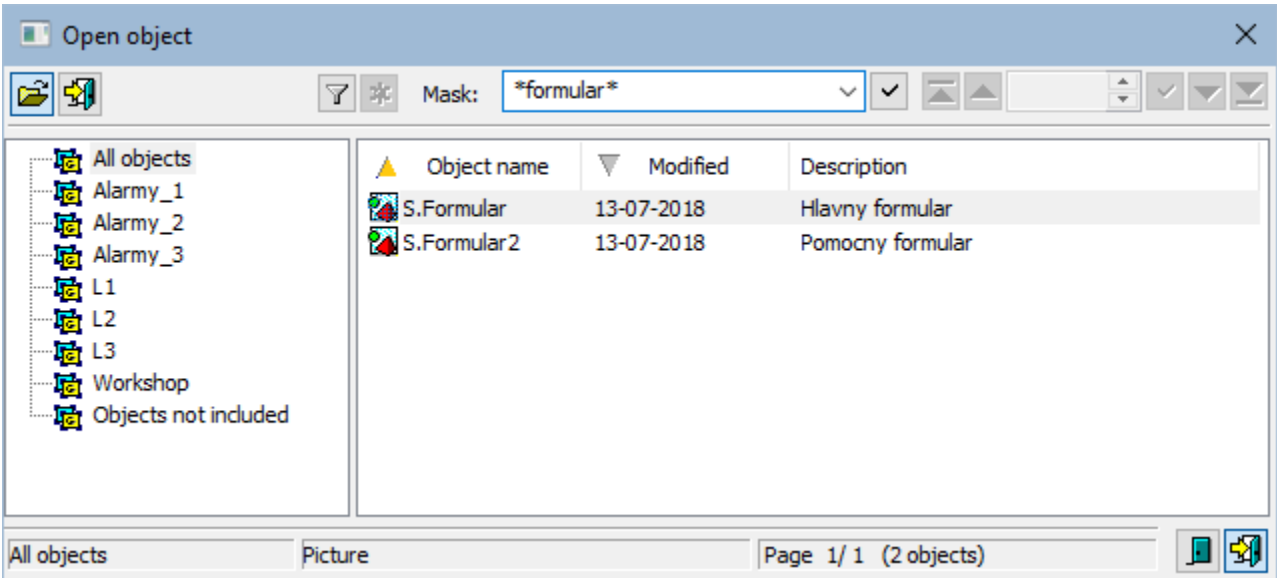
Open a Picture (Work with D2000 HI)


Opening a picture



Pictures are identified by unique name (D2000 System object) and description in the D2000 system.

To open a picture:

- a. Select the **Pictures** from the **Open** menu, or click  button in the **Main toolbar** (or press CTRL+S).
- b. Opened window contains a list of pictures.





- 1. Select required picture from the list.
- 2. Click  button. A picture may be opened by double-click on its name, too.

To find a particular picture in the list is possible by mask or by filter (clicking on button ). By using filter, the mask is blocked but the text is not deleted. Push the ENTER key or button  to start searching.

The text from filter is deleted after clicking on button . The button is active only if filter contains some text.

The Buttons placed on the bottom right corner determine the behaviour of the selection window after selecting an object:

	Unclose the selection window.
	Close the selection window.

Note

- If the notice **List is empty!** appears in the window then no picture, matching with the entered mask, has not been created, or logged on user does not have the access rights to the pictures.
- If the picture size is greater than the maximum size of the monitor, then the size of the picture that is being opened in the process **D2000 HI** will be automatically adjusted to permitted maximum size in the process **D2000 HI** (valid for pictures with the parameters **Resize with layout manager** and **Fixed size**).
- The administrator can see also the pictures with attribute **"Hide in HI list"**. The names of these pictures are written in lighter color against the other picture's name.

Related pages:

[Pictures](#)

