

Import from CNF

Import dialog window

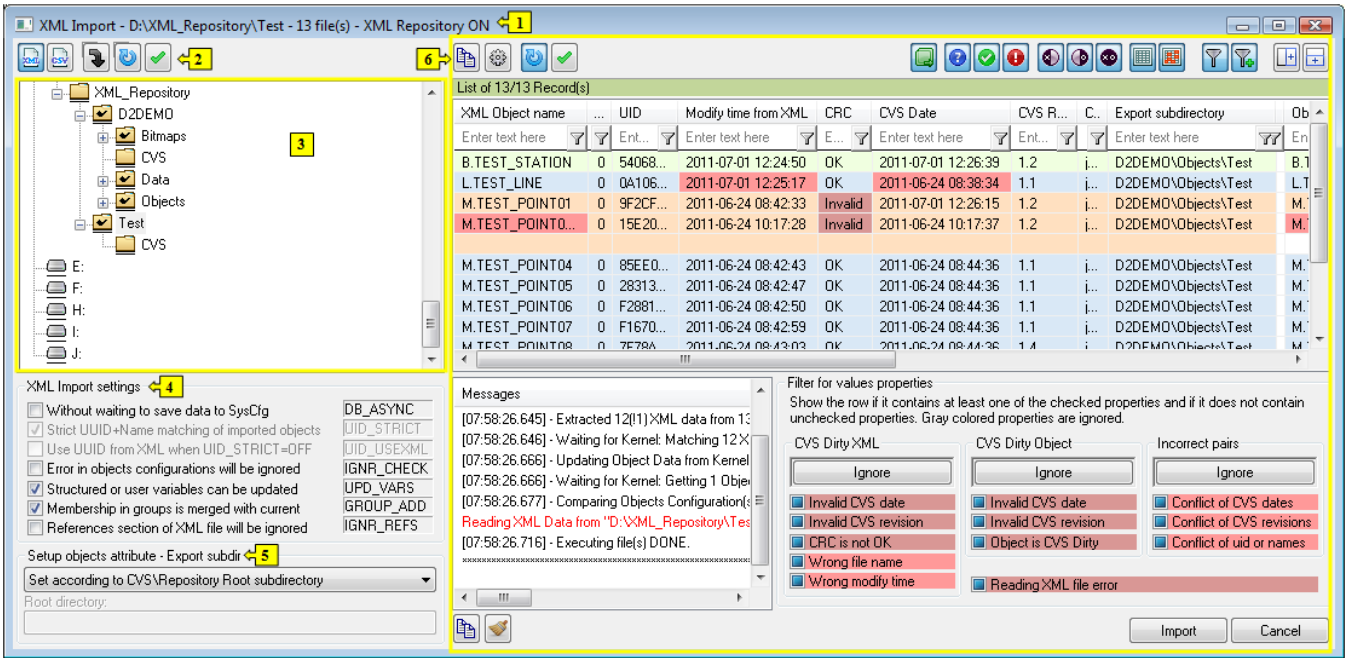
Import actions starting from [D2000 CNF](#):

- **XML Import** - select the item **Objects / XML Import** from main menu
- **CSV Import** - select the item **Objects / CSV Import** from main menu

Import actions starting from [D2000 GrEditor](#):

- **XML Import** - select the item **Configuration /XML Import** from main menu

The following dialog box will open:



Description of dialog box:









1	Title bar
2	Toolbar
3	Tree view and input settings
4	Import parameter settings
5	Attribute "Export subdirectory"
6	Module to compare the files with D2000 System objects

Title bar

A title bar consists of:

- Name of action ("XML Import", "CSV Import" or "XML & CSV Import"), which depends on the input settings.
- A flag for [XML Repository](#) (XML Repository ON) or [Automatic XML Export](#) (Automatic Export ON), but only one flag can be active at the same time.
- Next information are displayed after an output is updated, and depend on the input settings. It represents a path for a source directory (when there is a recursive tracking of subdirectories this path is in square brackets) which is followed by a number of files waiting for processing (XML, CSV or both).

Toolbar

	Input XML files.
	Input CSV files.
	Recursive searching of subdirectories. The files are searched also in subdirectories of the root directory.
	Refreshes the list automatically. If you use this button, the input files will be compared with D2000 System as soon as the input settings change, otherwise after clicking on button  . Consider this action because the comparison can take a long time. The manual updating by button  is more effective.
	<p>Refreshes the list according to input data or parameters of the comparison. If the input data have changed, the form of the button is like this .</p> <p>It changes into red when:</p> <ol style="list-style-type: none"> 1. The directory that contain the input files (xml or csv files) has changed. 2. A type of files has changed (xml, csv or both). 3. A way of searching has changed (recursively or only the first level). 4. XML Import setting for strict method of comparison (UID_STRICT) has changed. 5. XML Repository setting in active status (ON/OFF) has changed. <p>To update the list, click on this button. The points 4. and 5. disable to start XML Import. XML Import starts after you refresh the output.</p>

The buttons of a part 6 are described in the chapter [Module to display information from a comparison](#).

Tree view and input settings

In the tree view you can simply choose the input files to compare with D2000 System objects. The input data depend on which option you choose (XML, CSV or both). If you do not select any option it is unimportant.

The folders with a check mark icon contain CSV subdirectory and they have a special function for XML Repository.

The item "**Refresh**" in popup, opened over a node in the tree view, or shortcut **CTRL+R** allow to refresh the node. It is useful when some directory has been add or removed from this node.

Setting of import parameters

This means the setting of [import parameters](#).

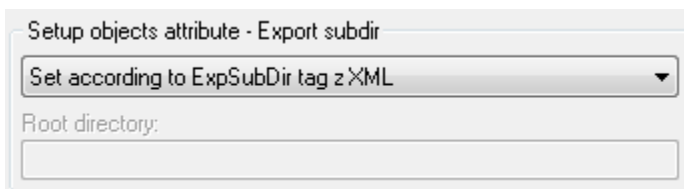
If the parameter **UID_STRICT** is checked, the parameter **UID_USEXML** is disabled.

The general attribute is a mutual dependence of parameters **UID_STRICT** and **UID_USEXML**. If the parameter **UID_STRICT** = ON, then the parameter **UID_USEXML** = OFF is disabled. Some of the parameters have the fixed values and are disabled, which depends on the selected import action. The settings of import parameters will be saved into registry after each update of the output or starting of the import. These settings relate to a particular computer.

The parameter **UID_STRICT** is enabled when the parameter [XML Repository in active status](#) (in the dialog box **XML Repository settings**) is not checked.

Export subdir attribute

These parameters determine which value will have the attribute "**Export subdir**" of the target objects after successful import. The setting is read before import.



Option	Description
Don't change value of target object attribute	Import does not influence the value of attribute " Export subdir " of the target objects.
Delete value of target object attribute	Import sets the value of " Export subdir " of the target objects to an empty string.

Set according to path and remove root directory	<p>Import sets the value of "Export subdir" of the target objects to be nested within the directory tree in view of root directory. A text field to set the value of root directory is available. If this field is empty the root directory is that one which the import have been started from.</p> <table><tr><th>Expected values</th><th>Example 1</th><th>Example 2</th></tr><tr><td>whole path of imported file import to directory value of text field for root directory</td><td>C:\Temp\App\ARA\Arch.xml C:\Temp\App</td><td>C:\Temp\App\ARA\Arch.xml C:\Temp\App C:\Temp\</td></tr><tr><td>export subdirectory</td><td>ARA</td><td>App\ARA</td></tr></table>	Expected values	Example 1	Example 2	whole path of imported file import to directory value of text field for root directory	C:\Temp\App\ARA\Arch.xml C:\Temp\App	C:\Temp\App\ARA\Arch.xml C:\Temp\App C:\Temp\	export subdirectory	ARA	App\ARA
Expected values	Example 1	Example 2								
whole path of imported file import to directory value of text field for root directory	C:\Temp\App\ARA\Arch.xml C:\Temp\App	C:\Temp\App\ARA\Arch.xml C:\Temp\App C:\Temp\								
export subdirectory	ARA	App\ARA								
Set according to ExpSubDir tag from XML	<p>Import sets the value of "Export subdir" of the target objects directly on value ExpSubDir stated in XML file. If ExpSubDir value is not defined in XML file, the value of object attribute is the empty string.</p>									
Set according to CVS\Repository Root subdirectory	<p>Import sets the value of "Export subdir" of the target objects on the value read from the Repository file.</p> <p>Warning: A block of XML files should be from the directory tree maintained by CVS client. In the directories containing XML files there is a subdirectory CVS with Repository file. If this condition is broken the import fails.</p>									

Note: The option "**Set according to ExpSubDir tag from XML**" is set by default for XML Import, but if [XML Repository](#) is checked, the option "**Set according to CVS\Repository subdirectory**" is set.

Module to compare the files with D2000 system objects

A dialog window for import of the files contains a general [module to display information from a comparison](#). The buttons placed in the right bottom part depends on the performed action.

The import dialog window contains "**Import**" and "**Cancel**" buttons. Before clicking on "**Import**" button, which starts the import, an acknowledgement dialog is open. When you click on "**Cancel**", the dialog window closes and returns back to the client process.

Process of import

The communication between client process ([D2000 CNF](#), [D2000 GrEditor](#)) and **D2000 Server** starts by opening the dialog window in the client process.

A mechanism of the import is following:

1. Confirm import, it starts the action:
2. Request for initialization of the action sent to D2000 Server.
3. XML files are sent to D2000 Server in batch.
4. D2000 Server processes the XML data:
 - data are loaded into cache
 - the first data conversion to structures in memory
 - getting the other paths to necessary files so that the action could continue (binary files)
5. Request for sending the supplementary files sent to D2000 Server (only if some one was requested).
6. Processing by the D2000 Server:
 - object matching and the second data conversion into structures in memory
 - final check of objects before the import
 - import of objects
7. D2000 Server will send the response to the client process about successful finish of the action.

When the dialog window in the client process is closed the communication between client and D2000 Server will be finished.



Related pages:

[D2000 XML](#)
[XML Import](#)
[XML Update](#)
[XML - CSV conversion support](#)
[Import parameters](#)
[Object matching - scheme](#)