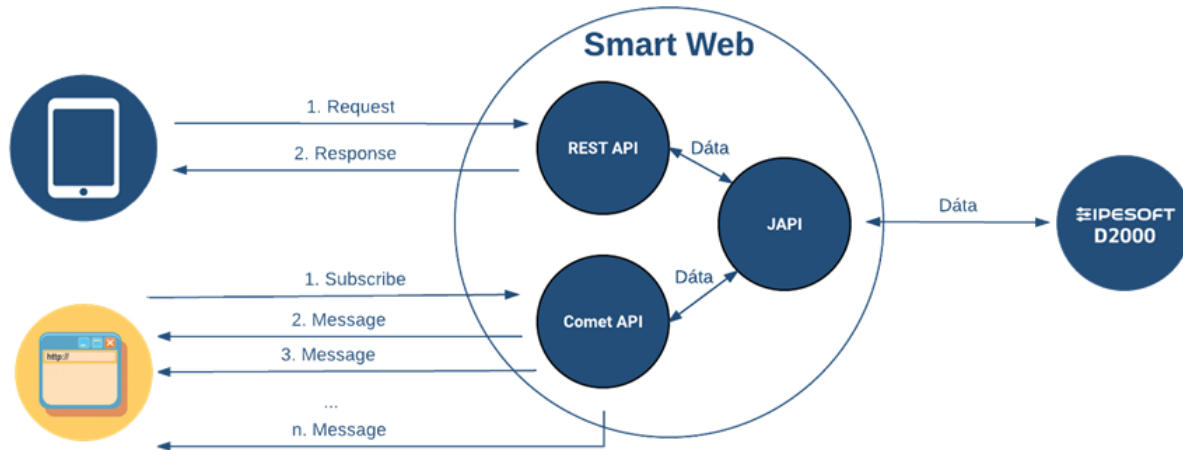


# Universal API for Access to D2000

The first key function of the SmartWeb platform is the possibility to uniformly access the data and services of D2000 using the universal API interface. This API is independent of the used client's technology and with the API, it is possible to acquire data and call services implemented in D2000.

In general, we can distinguish online technologies of client-server communication into two categories according to the communication character. The first category includes technologies in which the client always initiates data change and the server responds, so-called Request - Response communication. The second category covers Publish-Subscribe communication in which the client registers for subscription of certain data types (subscribe) and the server publishes these data for clients who asked for them.



SmartWeb server implements both Request-Response and Publish-Subscribe communication through the following interface:

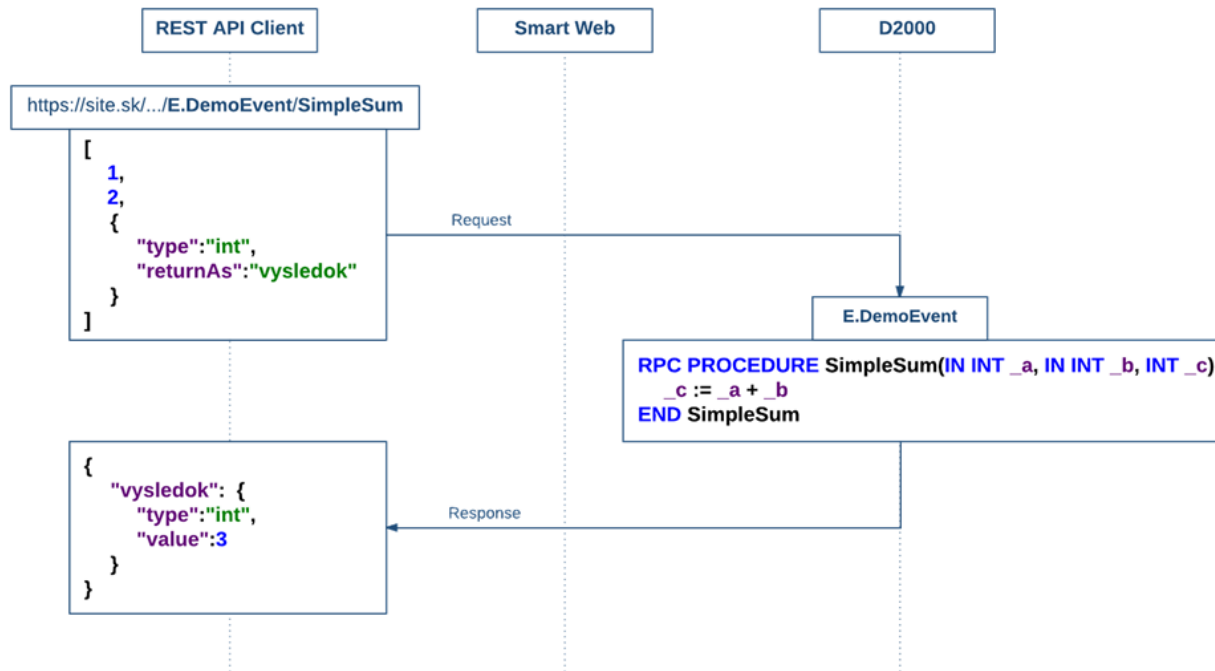
1. [REST API](#) realizes Request - Response communication
2. [Comet API](#) realizes both Request-Response and Publish-Subscribe communication
3. ODATA API is a specialized Request-Response API defined by the [Open Data Protocol](#) standard. Currently, this API is adapted to the ability to read historical values and EDA vectors to the Azure Cloud through the Azure Data Factory cloud integration platform.

All interfaces communicate with the D2000 system and with the EDA server through the JAPI library.

## Rest API

Rest API is a standard API for web and mobile applications. The SmartWeb Rest API offers the following possibilities:

- reading archives
- calling of any ESL RPC and Java RPC
- downloading/uploading of binary content from/into D2000 through SBA RPC
- serialization of all types and structure
- selection of return data (time tag, flags, ...), downscaling
- performance monitoring
- authentication, security, compression, response streaming, and so on...



This figure illustrates the example of using the REST API interface for calling on simple D2000 RPC procedure.

## Comet API

Comet API provides the same functions as REST API and more:

- subscription of D2000 objects
- registration of javascript RPC asynchronously calling from D2000
- notifications about the session from the SmartWeb server (expiration, session expiration)

The SmartWeb Comet API is implemented through the [cometd](#) library whose robust functionality is certified based on solutions with 150 thousand users. Among the advantages of this library are:

- intelligent choice of optimal communication protocol based on actual connection possibilities - WebSocket, HTTP 1.1/2.0
- connection implementable in any language - open specification
- low payload for keeping the connection