
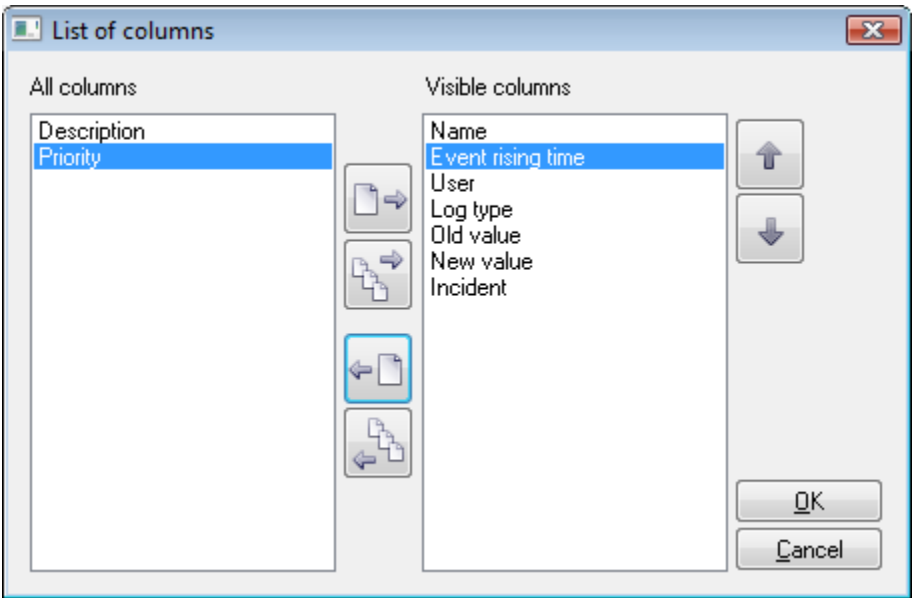








Configure the Table Displaying Data from the Log Database (HI)


Configuration of the table displaying data from the log database

The following dialog box is opened after clicking  - the **Columns** button. The dialog box allows adjusting the table appearance - show/hide columns and their order.



| Button | Function |
|---|--|
|  | Move the highlighted column from the left list into the right list of visible columns. |
|  | Move all columns from the left list into the right list of visible columns. |
|  | Move the highlighted column from the right list into the left list of invisible columns. |
|  | Move all columns from the right list into the left list of invisible columns. |
|  | Move the highlighted column in the right list to the previous position – one position up. |
|  | Move the highlighted column in the right list to the following position – one position down. |

Order of the "Visible columns" (on the right side) determines the order of columns displayed in the dialog box displaying data from the log database. A column placed at the first place will be displayed as the first one from the left, the second column will be the second one from the left, etc.

 **Related pages:**
[Representation of data from the log database](#)