

# SCS Config

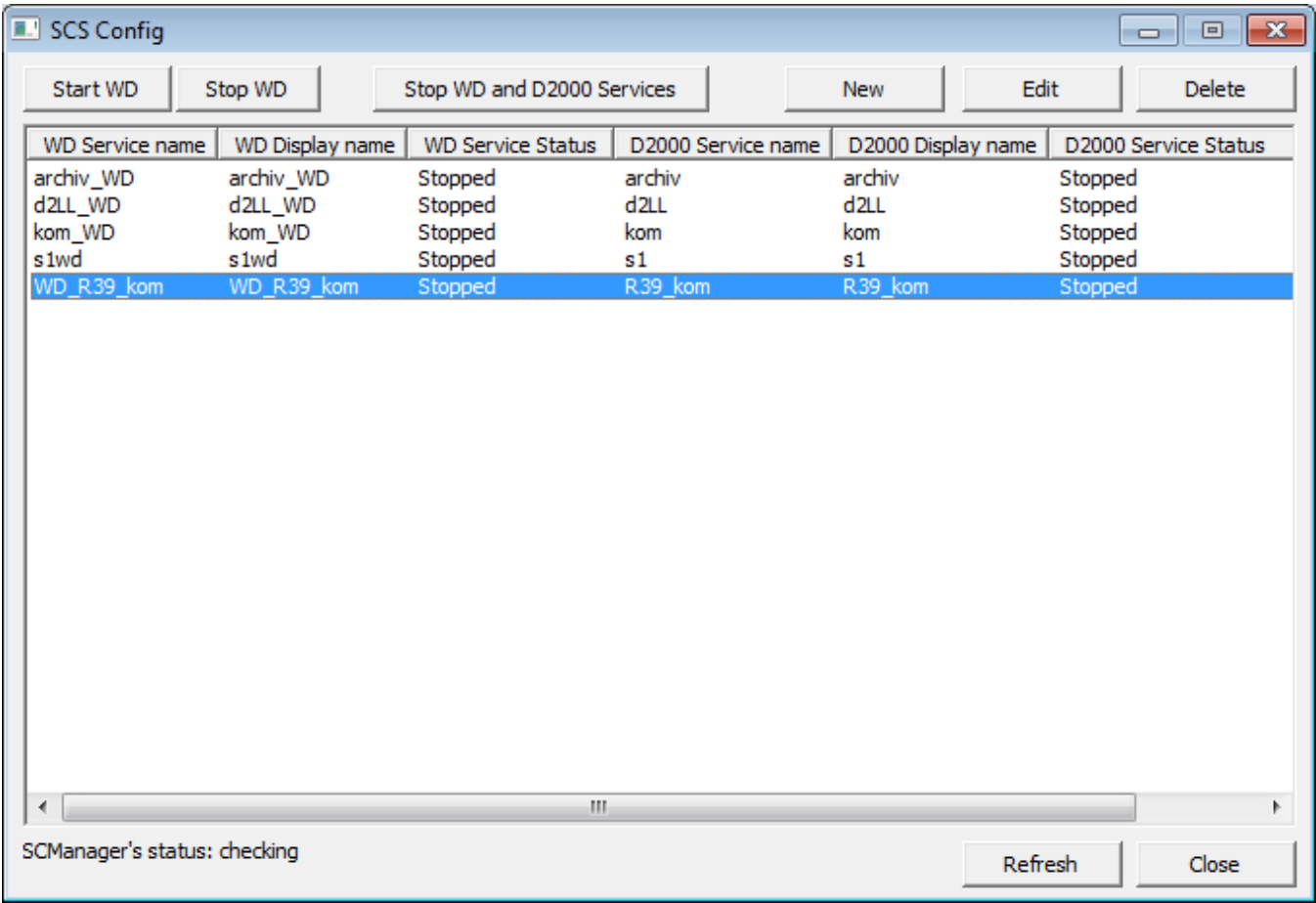
The utility **SCS Config** allows to create and manage a pair of services - the utility **StartCli** and a D2000 system process monitored by the utility **StartCli**.

To start the utility **SCS Config** , run the file *scsconfig.exe* located in the subdirectory **Bin** of the [installation directory](#).

- Utility description
- [Creating a new service](#)
- [Editing a service](#)
- [Starting a service](#)
- [Stopping a service](#)
- [Selecting a service](#)

## Utility description

The utility **SCS Config** is a Windows application. Starting the file *scsconfig.exe* opens the following window:



The window contains a list of services monitored by the utility **Startcli**. The window allows users to:

- [create a new service](#)
- [edit the parameters of an existing service](#)
- [run a service](#)
- [stop a service](#)
- [delete a service](#)

The window also displays an information of the status of the **Service Manager** application - service database manager. Possible states:

- *UnLock* - unlocked
- *Lock* - locked

Pressing the key **F5** refreshes the list of services.

## Creating a new service

Selecting the item **New** from the menu **System** in the **SCS Config** window opens the following window:

The image shows a Windows-style dialog box titled "SCS Config - Configuration dialog". It has two main sections: "WD Service" on the left and "D2000 Service" on the right. At the top, there is a "Computer:" field with the value "WS1GOND1". In the "WD Service" section, there are fields for "Service name:" (WD\_alarm), "Display name:" (WD\_alarm), "File path:" (D:\D2000\D2000.EXE\bin\startcli.exe), "Startup type:" (Automatic), "Frequency:" (20), and "Init Frequency:" (5). Below these are radio buttons for "Local System Account" (selected) and "This Account", with a checkbox "Allow service to interact with desktop" under the first option. The "D2000 Service" section has a checkbox "Existing service" at the top right, followed by fields for "Service name:" (D2000\_alarm), "Display name:" (D2000\_alarm), "File path:" (D:\D2000\D2000.EXE\bin\Alarm.exe), and a "Browse" button. It also has a "D2000 params:" field. Below these are radio buttons for "Local System Account" (selected) and "This Account", with a checkbox "Allow service to interact with desktop" under the first option. At the bottom right are "Create" and "Cancel" buttons.

### Computer

Computer name.

### Existing service

Parameter is accessible only when a new WD Service is being created for an existing D2000 Service.

### WD Service

#### Service name

Service name. Required parameter.

Note: see [below](#) for naming convention recommendations.

#### Display name

Name that will be displayed in the **Service Manager**. Required parameter.

Note: see [below](#) for naming convention recommendations.

#### File path

Full path to the *startcli.exe* file.

#### Startup type

Service startup type:

- *Automatic* - runs the service automatically during the Windows startup
- *Manual* - the service will be started manually (by user)
- *Disabled* - starting the service is disabled

## Frequency

The **/F** parameter of the utility [StartCli](#).

## Init Frequency

The **/T** parameter of the utility [StartCli](#).

## Local System Account

Specifies that the service is logs on to the system account.

## Allow service to interact with desktop

Possibility of interaction with user.

## This Account

Allows to assign the service to an account.

## D2000 Service

### Service name

Service name. Required parameter.

Note: see [below](#) for naming convention recommendations.

### Display name

Name that will be displayed in the **Service Manager**. Required parameter.

Note: see [below](#) for naming convention recommendations.

### File path

Full path to a D2000 system executable file. Required parameter.

### D2000 params

[Start parameters](#) of defined process. Use of the parameters depends on the process.

## Local System Account

Specifies that the service is logs on to the system account.

## Allow service to interact with desktop

Possibility of interaction with user.

## This Account

Allows to assign the service to an account.

**Note:** When you assign the service to the account, you have to define the parameter **Password** (cannot be an empty string).

## Editing a service

---

Select required service in the **SCS Config** window and click the button **Edit**. There are the same rules for editing as described in [creating a new service](#).

### WARNING

The parameter **Service name** cannot be modified at all.

## Starting a service

---

Select required service in the **SCS Config** window and click the button **Start WD**.

## Stopping a service

---

Select required service in the **SCS Config** window and click the button:

- **Stop WD** - if you want to stop only the monitoring service ([StartCli utility](#)). D2000 process will not be stopped.
- **Stop WD and D2000 Services** - if you want to stop both the monitoring service ([StartCli utilita](#)) and D2000 service. Then, D2000 service will be stopped too.

## Deleting a service

---

Select required service in the **SCS Config** window and click the button **Delete**.

## Naming convention recommendations.

The goal is to define a convention so that multiple processes (KOM, EVH, ARC, others) of multiple applications can run on a remote computer; including non-D2000 processes that cooperate with the D2000.

We recommend not to use spaces and give the same name for both *Service name* and *Display name*.

### Instance processes:

Watch dog	=>	D2WD_<APPLICATION>_<Process>.<SUFFIX>_<instancia>
D2000 proces	=>	D2000_<APPLICATION>_<Process>.<SUFFIX>_<instancia>

Examples:

D2WD\_MES\_ReportGenerator.EVH\_1

D2000\_MES\_ReportGenerator.EVH\_1

D2WD\_OD\_Sysprof.KOM\_2

D2000\_OD\_Sysprof.KOM\_2

### Non-instance processes:

Watch dog	=>	D2WD_<APPLICATION>_<Process>.<SUFFIX>
-----------	----	---------------------------------------

D2000 proces	=>	D2000_<APPLICATION>_<Process>.<SUFFIX>
--------------	----	--

Example:

D2WD\_MES\_ReportGenerator.EVH

D2WD\_MES\_Sysprof.EVH

D2WD\_OD\_Sysprof.KOM

D2000\_OD\_Sysprof.KOM

### Third-party processes:

Third-party process	=>	D2000_< APPLICATION >_<ExtProcess>
---------------------	----	------------------------------------

Example:

D2WD\_MES\_AzurePublisher

D2000\_MES\_AzurePublisher

### Notes:

<APPLICATION> - capital letters, or upper and lower case

<Process> - ideally the same as it is in the D2000 application (SYSPROF, TaskManager, etc.)

<SUFFIX> - capital letters (KOM, ARC, EVH, DBM)  
<ExtProcess> - a reasonable name of the external process



**Related pages:**

[D2000 system utilities](#)