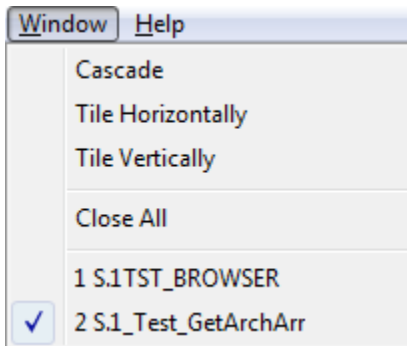


Work with Several Pictures

Working with multiple pictures

The multiple windows can be opened on the desktop of the process [D2000 GrEditor](#). The names of opened pictures are displayed in the menu **Window**.



Clicking on any name, displayed in the menu, activates the picture.

The picture windows opened on the desktop can be arranged by using the icons **Cascade**, **Tile Horizontally** and **Tile Vertically**.

If a picture window is smaller than defined picture settings, it contains the scrollbars.

Closing all opened pictures

- Select the item **Close All** from the menu **Window**.



Related pages:

- [Create a new picture](#)
- [Open a picture](#)
- [Save the picture](#)
- [Close the picture](#)
- [Picture settings](#)
- [Resize the picture](#)
- [Delete the picture content](#)