
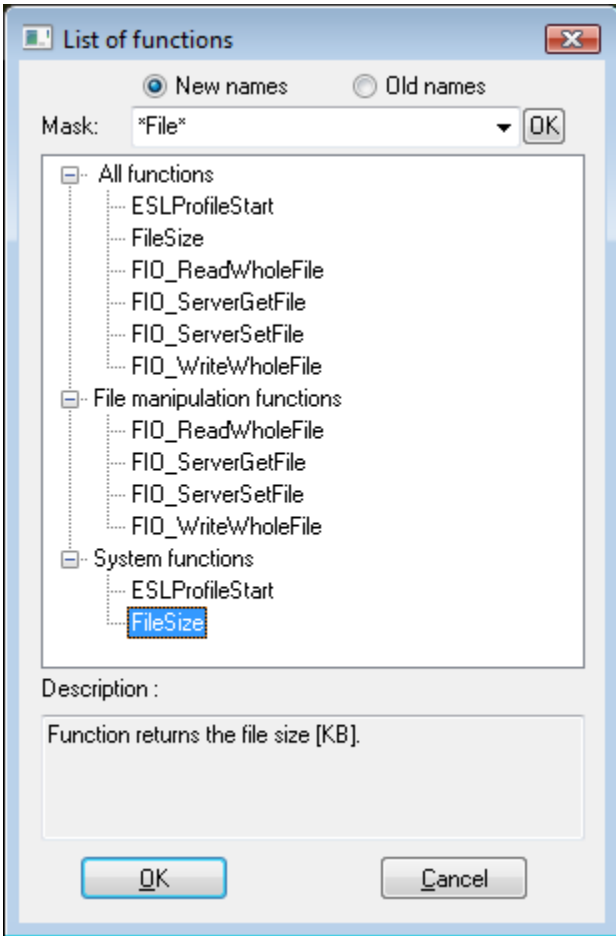


Selection of a function

Clicking the button  **Functions** opens the following dialog box allowing to select a function:



New names / Old names

Shows new / old names of functions in the list.

Mask

Mask allows more quick searching for the functions, names of which have some common characters. You can use [special characters](#). After filtering according to mask only the groups which are not empty will display and the list of all functions is placed as the first.

Description

Brief description of selected functions.

Selected function is to be inserted on the current cursor position after clicking the button **OK**.

Related pages:

[Script editor](#)
[Script editor - toolbar](#)