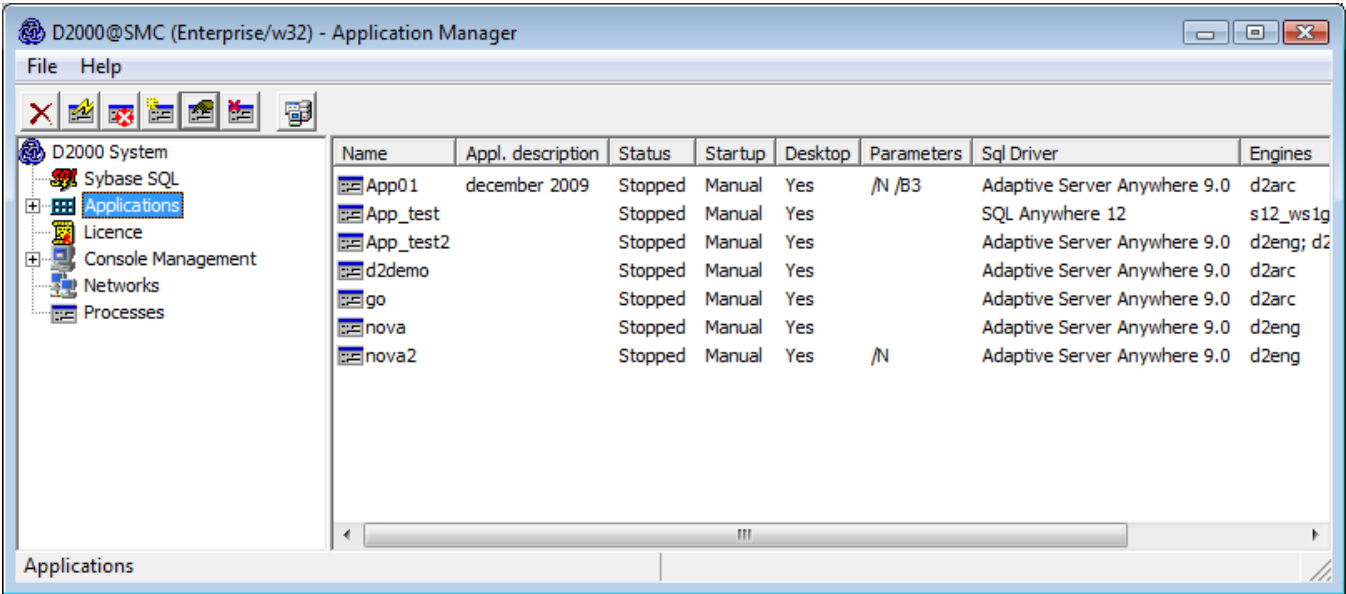


# Configuration of D2000 system applications - D2000 Application Manager

D2000 system was projected to install more applications of one D2000 system version on one computer.

The process **D2000 Application manager** (*d2smc.exe*) provides the complex management not only of applications, but also other system facilities. User who wants to work with the process must be logged on to the operating system with the **administrator access rights**.



If the **D2000 Application Manager** is used via Remote Desktop, it should be used for the purpose of administration (*mstsc.exe /admin*).

User who has no special access rights, set in operating system Windows, can perform only **limited activities** which relate to process **D2000 Application Manager**.

The process **D2000 Application Manager** is a client process of D2000 system, that allows:

- [database servers management](#)
- [D2000 system application management](#)
- [showing the overview of the installation licence options](#)
- [management of interactive consoles connected to D2000 Server](#)
- [management of client's logon to D2000 Server](#)
- [management of running application's processes](#) (starting, stopping processes, [sending commands](#))

 **Related pages:**  
[System processes](#)