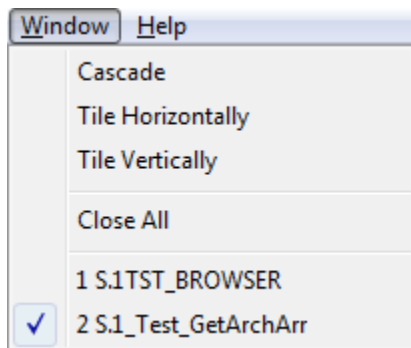


# Work with Several Pictures

## Working with multiple pictures

The multiple windows can be opened on the desktop of the process [D2000 GrEditor](#). The names of opened pictures are displayed in the menu **Window**.



Clicking on any name, displayed in the menu, activates the picture.

The picture windows opened on the desktop can be arranged by using the icons **Cascade**, **Tile Horizontally** and **Tile Vertically**.

If a picture window is smaller than defined picture settings, it contains the scrollbars.

## Closing all opened pictures

- Select the item **Close All** from the menu **Window**.



### Related pages:

[Create a new picture](#)  
[Open a picture](#)  
[Save the picture](#)  
[Close the picture](#)  
[Picture settings](#)  
[Resize the picture](#)  
[Delete the picture content](#)