

MEN-SMB2 device

MEN-SMB2 device communication protocol

- Description
- Communication line configuration
- Communication station configuration
- I/O tag configuration
- Literature
- Changes and modifications
- Document revisions

Description

MEN-SMB2 device protocol is used to control input-output peripherals with integrated SMB2 interface for devices produced by MEN.

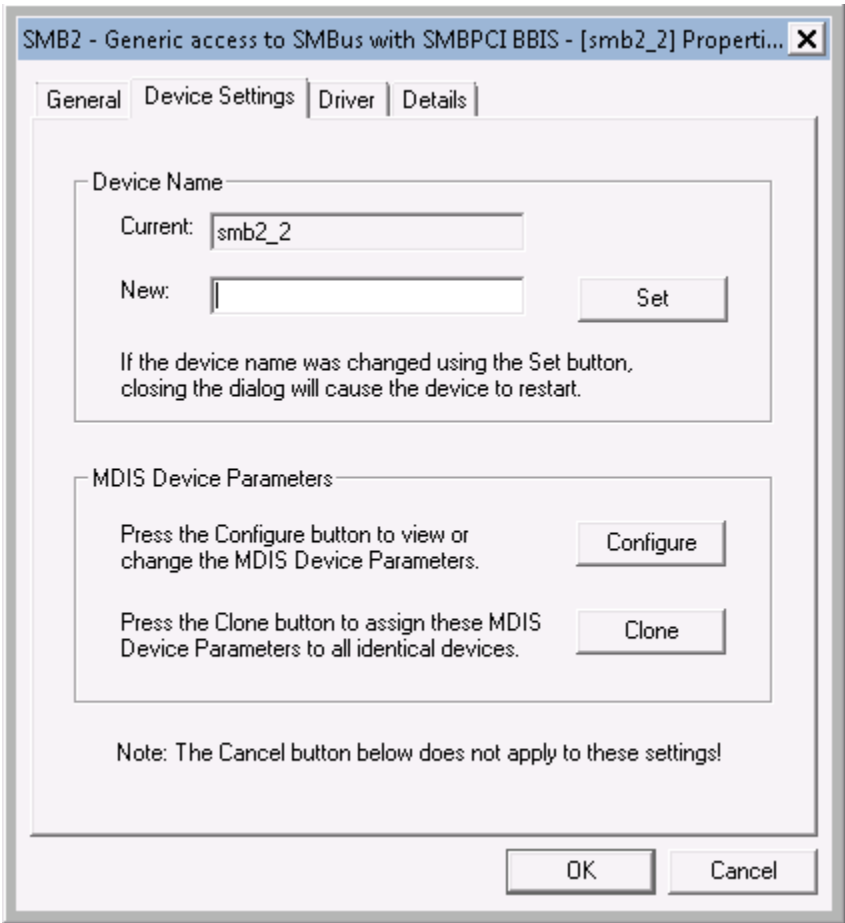
Communication line configuration

- Communication line category: **API**

Communication station configuration

Station address

Address of station is a text identifier of SMB2 interface. Its name can be found in "Device Manager", Device Settings tab.



Station protocol parameters

Parameter	Meaning	Default value
-----------	---------	---------------

Full Debug	Logging is enhanced with listings that enables fast error detection.	NO
------------	--	----

I/O tag configuration

Possible I/O tag types for variable mode: **Ai, Ao, Ci, Co, Di, Dout**

I/O tag address

Address of I/O tag is entered in decimal format. For example, this protocol may be used to control the LED indicators. The address of registry, which is used to configure them, is "0x40". I/O tag address will be "64". This I/O tag will return 1-byte information about state of LED indicators. If only one LED diode should be controlled, I/O tag address can be for example "64.3". I/O tag defined such way will control third LED diode.

Literature

-

Changes and modifications

-

Document revisions

- Ver. 1.0 – 25.5.2015 - creation of document



Related pages:

[Communication protocols](#)