

MDIS device

MDIS device communication protocol

- Description
- Communication line configuration
- Communication station configuration
- Configuration of interfaces
- Literature
- Changes and modifications
- Document revisions

Description

MDIS device protocol is used to control input-output peripherals and hardware of watchdog of devices produced by MEN.

Communication line configuration

- Communication line category: API

Communication station configuration

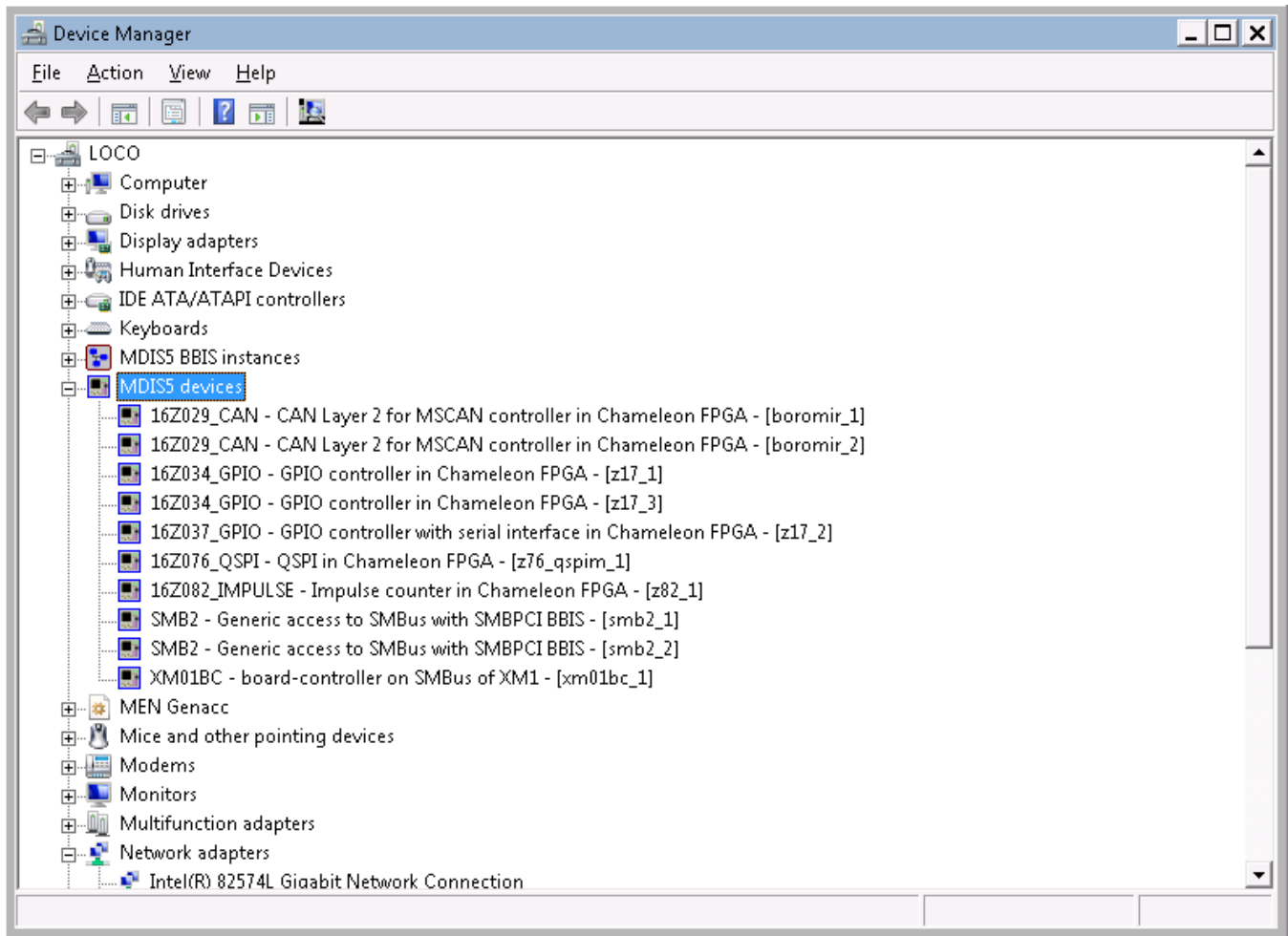
Station protocol parameters

Parameter	Description	Default value
Full Debug	Logging is enhanced with listings that enable fast error detection.	NO
I/O Interface Name	Unique text identifier of interface with binary input-outputs.	z17_9
Watchdog Interface Name	Unique text identifier of interface of HW watchdog.	xm01bc_1
Control Interface Name	Unique text identifier of interface that is used to configure other interfaces.	z17_1

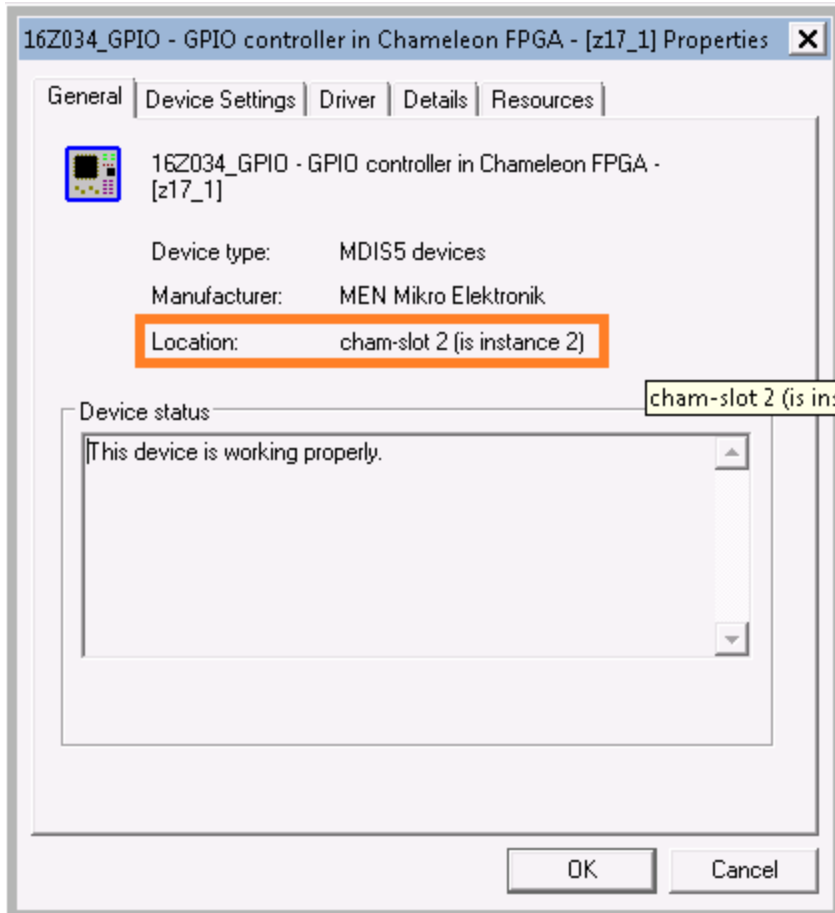
Configuration of interfaces

The configuration of MDIS5 interfaces is possible through Device Manager of Windows OD, tab "MDIS5 devices".

Types of interfaces can be identified by their name. **Binary IO** peripheral is a device called **16Z037_GPIO**. The name of **configuration interface** is **16Z034_GPIO**. In Device Manager you may find more devices of the same name. Therefore, you should display the properties to identified the particular interface. This interface should be placed in "**cham-slot 2(is instance 2)**" (see figure below). Next interface is **HW watchdog**, its name is **XM01BC**.



Each of these devices can be addressed via its unique identifier. The modification of identifier can be done in "Device Manager -> MDIS device -> Properties -> "Device Settings" tab.



Literature

-

Changes and modifications

-

Document revisions

- Ver. 1.0 – 13.5.2015 - creation of document



Related pages:

[Communication protocols](#)