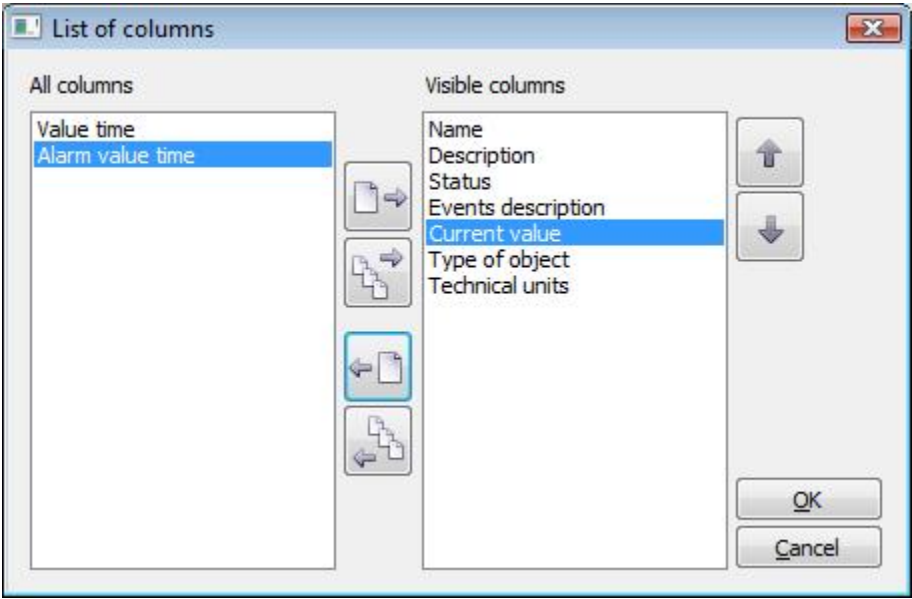






Configuration of the alarm table columns



Clicking one of the buttons placed right from the **Active - basic content**, **Active - extended content** or **Blocked alarms** items in the [Console Properties](#) (or **User preferences**) dialog box opens the following dialog box allowing to define the respective alarm list contents - displaying individual columns and their order in the list.



The dialog box contains the following buttons.

	Move the highlighted column from the left list into the right list of visible columns.
	Move all column from the left list into the right list of visible columns.
	Move the highlighted column from the right list into the left list of invisible columns.
	Move all column from the right list into the left list of invisible columns.

Order of the columns in the right list **Visible columns** determines the order of columns displayed in the **Alarm list** window. The column placed in the first position will be displayed as the first one from the left, the second column will be the second from the left, etc.

	Move the highlighted column in the right list to the previous position – one position up.
	Move the highlighted column in the right list to the following position – one position down.