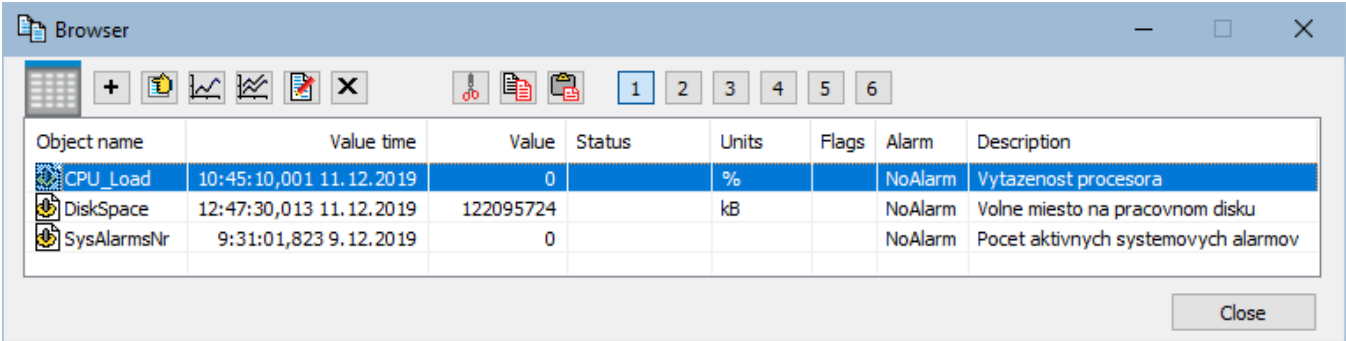


Browser (Work with D2000 HI)

Browser is a tool of the process [D2000 HI](#) that allows to monitor attributes (current value, time of update, flags, etc.) of selected objects by means of special control window. In this control window, you can define up to five mutually independent pages, where each page contains different group of D2000 system objects. Operator can switch among the pages, copy and move objects and also open the control window of selected object.

Browser with some logged objects is shown on the following figure.



Browser window contains the following buttons.

Button	Function
Add object	Adds a new object into the current page of Browser.
Set object	Opens the control window of selected object.
Graph	Opens a dynamic graph for selected object.
Graph+	Opens a dynamic graph - multigraph to show several flows of object.
Edit	Edit object. Only when process CNF is running.
Close	Discards selected (highlighted) objects from the current page.
Cut	Cuts selected objects.
Copy	Copies selected objects.
Paste	Pastes the objects that are cut or copied into current page of Browser.
1 up to 6	Switches among the Browser pages.
Close	Closes the Browser.

Contents of pages 1 up to 5 are saved when closing the Browser. Page 6 behaves differently. The page displays objects added from an opened picture. Its content is not saved.

Related pages:
[Add a new object to a Browser page](#)
[Copy or move objects between Browser pages](#)